

YOUR PRACTICE. YOUR SOLUTIONS.



Why have we created this product guide?

This brochure aims to help you choose the right products from Carestream Dental for your practice.

With this in mind, we have summarised the most important advantages and selling points of our digital radiography and imaging systems, software and applications.



For further information, please contact your local authorised dealer:

Register your product online and get an additional year of warranty!

<http://register.carestreamdental.com/eamer>

Visit our website: carestreamdental.com

Intraoral Cameras and Generators



CS 1200



CS 1500



CS 2100



CS 2200



CS 2200 Irix Mount

Intraoral X-Ray



RVG 5200



RVG 6200



CS 7200



CS 7600

Extraoral X-Ray



CS 8100 Family



CS 9300 Family



CS 9600

CAD/CAM



CBCT Scanning



CS 3600 / CS 3600 Access



CS 3100

Software



CS Acquisition



CS Imaging



CS Airway



CS Adapt



CS Model and CS Model+



PDIP



Trophy DICOM



OUR SERVICE OFFERINGS FOR YOU



CS Advantage

CS Advantage is a new Carestream Dental service product built around three main pillars: warranty protection, software update and support programs. At the moment, CS Advantage is available for our newest products like CS 3600, CS 9600, CS Imaging Software Version 8 and CS Model+.



CS Protect

- Warranty extension on all parts
- Provides a safeguard against unexpected equipment repairs in the event of failure or malfunction by extending the manufacturer's standard warranty
- Offers fast equipment repair and replacement turnaround times to reduce downtime and prevent disruption to practice workflow



CS Update

- Keeps you informed of the latest software updates as they become available
- Ensures you always have access to the latest technology and software innovations
- Facilitates software maintenance, updates and enhancements through a simple download link and license key



CS Support

- Through site visits, phone support and troubleshooting our business partners keep your systems up and running
- Carestream Dental Institute provides high-quality online training
 - Available anytime, anywhere via a high-speed internet connection
 - Self-paced, with initial and ongoing product training
 - Multilingual, including English, Spanish, French, German and Italian
- Additional support is available depending on product range (e.g., online community, webinars, scan quality check service)



Care Protect

Care Protect is a 3-year warranty extension which applies for the main part of our product portfolio except software.

Intraoral imaging



CS 1200

Intraoral Camera

Superior image quality at an affordable price.



Features and benefits

- High image resolution (1024 x 768)
- Easy to share, supporting both PC and analog display
- Lightweight and compact
- The rounded head and tapered shape of the camera ensure patient comfort
- Six LED illumination system automatically adjusts to ensure perfectly lit images in any lighting condition
- Stores up to 300 images within the camera itself, eliminating the need for memory cards or multiple computers

Product	Cat. No.
CS 1200 Wired USB	6559991
Intraoral Cameras 3-year Care-Protect	5317060

Technical specifications

Sensor	Micron 1/2.5 CMOS
Video resolution	640 (H) x 480 (V)
Image resolution	1024 (H) x 768 (V)
Focus range	3 mm – 25 mm
Angle of view	90°
Field of view	80°
Focus	Fixed Focus
Light source	6 White LED array
Video output	TV-NTSC, TV-PAL, VGA, S-Video
Connection	USB 2.0

Recommended PC requirements see page 35

CS 1500

Intraoral Camera



The ideal communication tool for any dental practitioner.



Features and benefits

- Best-in class image quality and resolution
- Patented true autofocus technology
- With built-in Wi-Fi support, the camera provides total freedom of movement
- White LED exposure ensures uniform and bright illumination
- Intraoral and extraoral imaging
- Compatible with computer and video screens
- Available as wired and wireless configuration

Product	Cat. No.
CS 1500 Wireless	6559801
CS 1500 Wired USB	6559819
Intraoral Cameras 3-year Care-Protect	5317060

Technical specifications

Sensor	Micron 1/2.5 CMOS
Video resolution	640 (H) x 480 (V)
Image resolution	1024 (H) x 768 (V)
Focus range	1 mm to infinity
Angle of view	90°
Field of view	80°
Focus	Autofocus
Light source	8 White LED array
Video output	TV-NTSC, TV-PAL, VGA, S-Video
Connection	USB 2.0

Recommended PC requirements see page 35

Intraoral radiography

CS 2100 Intraoral X-Ray System

Sharp, high contrast images with an affordable high frequency generator.

Features and benefits

- High-frequency DC technology at the price of a conventional generator
- Sharp and high-contrast images for easy diagnosis
- Easy-to-use and fast-setting generator thanks to its improved timer design
- Dose display after each exposure
- Ideal for digital sensors, analog films or phosphor plates
- Multiple configurations available

Product	Cat. No.
CS 2100	5321898
Extension arm 170 cm	5188545
Extension arm 188 cm	5188552
Extension arm 205 cm	5188560
CS 2100 3-year Care-Protect	5317094



CS 2200 Intraoral X-Ray System

Superior digital image quality and accurate diagnoses in any environment.

Features and benefits

- Maximum image quality with minimum exposure
- Total control on tube voltage (60 or 70 kV) for high contrasted or high latitude images
- Intuitive and easy-to-use
- Ideal for digital sensors, analog films or phosphor plates
- High frequency for better patient safety - reduces the radiation dose up to 25% in comparison with a standard generator
- Dose display after each exposure
- Multiple configurations available, a mobile or fixed column mount, as well as wall mounting option fully compatible with the Irix installed base



Irix Mount

Complete unit with wall mount for replacing existing IRIX systems as well as a variety of other popular manufacturers' systems. Existing holes can be used for wall mounting

Wall Mount

Product	Cat. No.
Wall mount series	
CS 2200	5321906
CS 2200 Irix mount	5321880
Extension arm 170 cm	5188545
Extension arm 188 cm	5188552
Extension arm 205 cm (except Irix mount)	5188560
CS 2200 Irix mount with long arm 205 cm	5159660

Technical specifications

Power supply	230 – 240 V
X-ray generator	Very high frequency – DC (300 kHz)
Tube voltage	CS 2100: 60 kV CS 2200: 60 kV, 70 kV
Tube current	7 mA
Tube focal spot	0.7 mm IEC
Focal spot/skin distance	200 mm

X-ray units are also available with 100-110-130 V



RVG 5200

Digital Radiography System

Intuitive intraoral imaging.
Affordable price.

Features and benefits

- An ideal solution for basic intraoral imaging needs
- Exceptional images quickly and easily
- Advanced image processing tools
- 16 lp/mm true image resolution
- Affordable entry point into digital intraoral imaging



Product	Cat. No.
RVG 5200 size 1	5311295
RVG 5200 size 2	5311303
RVG 5200 3-year Care-Protect	5317052

Technical specifications

Sensor size 1



Sensor size 2



True image resolution*	16 lp/mm	16 lp/mm
Pixel size	19 µm	19 µm
External dimensions	27.6 x 37.7 mm	32.2 x 44.2 mm
Dimensions of active area	22.2 x 29.6 mm	26.6 x 35.5 mm
Number of pixels	1.82 million	2.63 million
Sensor plate thickness	7.3 mm	7.3 mm
Purpose	All-purpose sensor	Bitewing examinations
Sensor	CMOS with optical fiber technology	
Connection	USB 2.0	

Recommended PC requirements see page 35

***Did you know?** Theoretical resolution is a calculation of what the sensor is capable of in an ideal world, based solely upon the number of pixels and pixel size of the CMOS sensor. In contrast, **true resolution** adds in the components of the finished product, including sealants, shock layers, scintillators, and protective housing, as well as detector noise and scanner vibrations, to determine the measured resolution in lp/mm.



RVG 6200

Digital Radiography System

Maximum diagnostic precision. Film-quality digital images. Perfect for any dental application.

Features and benefits

- 24 lp/mm true image resolution promotes maximum diagnostic precision
- Customized image contrast according to diagnostic need
- Ergonomically optimized rear entry cable attachment facilitates comfortable positioning
- Sensor cable is 20% thinner and more flexible than previous models of RVG sensors
- Workflow is reduced by two steps and is optimized to the extreme: Position. Expose. View.
- Simplified installation process verifies that the sensor is installed correctly
- Better diagnostic and improved workflow with CS Adapt (for details see page 30)



Optimized Contrast Optimized Smooth Ultra Speed Insight

Product	Cat. No.
RVG 6200 size 1	5310719
RVG 6200 size 2	5310727
RVG 6200 3-year Care-Protect	5317052

Technical specifications

Sensor size 1



Sensor size 2



True image resolution*	> 24 lp/mm	> 24 lp/mm
Pixel size	19 µm	19 µm
External dimensions	27.6 x 37.7 mm	32.2 x 44.2 mm
Dimensions of active area	22.2 x 29.6 mm	26.6 x 35.5 mm
Number of pixels	1.82 million	2.63 million
Sensor plate thickness	7.3 mm	7.3 mm
Purpose	All-purpose sensor	Bitewing examinations
Sensor	CMOS with optical fiber technology	
Connection	USB 2.0	

Recommended PC requirements see page 35

***Did you know?** Theoretical resolution is a calculation of what the sensor is capable of in an ideal world, based solely upon the number of pixels and pixel size of the CMOS sensor. In contrast, **true resolution** adds in the components of the finished product, including sealants, shock layers, scintillators, and protective housing, as well as detector noise and scanner vibrations, to determine the measured resolution in lp/mm.

Comparative Matrix for RVG Range

Features	RVG 5200	RVG 6100	RVG 6200
Topline Advantages	<ul style="list-style-type: none"> • Best value • Resolution/price balance 	<ul style="list-style-type: none"> • Direct to USB • Small size and low dose for children 	<ul style="list-style-type: none"> • Direct to USB • Streamlined, three-step workflow • Highest resolution
Pedodontic sensor – Size 0		✓	
Size 1 and 2 sensors	✓		✓
Automatic FMS	✓	✓	✓
Waterproof	✓	✓	✓
Specialized positioners	✓	✓	✓
Shock resistant	✓	✓	✓
Optimal patient comfort	✓	✓	✓
Instant image acquisition	✓	✓	✓
High resolution	✓	✓	✓
USB Connectivity	✓	✓	✓
Best-in-class warranty	✓	✓	✓
Advanced image enhancement	✓	✓	✓
TWAIN compatible	✓	✓	✓
Film-quality resolution			✓
Caries detection			✓
Wi-Fi enabled			
CS Adapt image processing module			✓

Use the Comparative Matrix below to select the best sensor model and sensor size based on the practitioner’s specialty or intended use.

Systems	Size 1		Size 2	
	RVG 5200	RVG 6200	RVG 5200	RVG 6200
General diagnostics	●●	●●●	●●	●●●
Caries detection	●●	●●●	●●	●●●
Endodontics	●	●●●	●	●●●
Implantology	●●	●●●	●●	●●●
Pedodontics	●	●●		
Periodontics	●●	●●●	●●	●●●

● Good ●● Better ●●● Best

Please note bullets are simply a recommendation based on feedback from our thought leaders and users. One bullet indicates it meets the basic requirements for the application. Three bullets indicates it is the best choice.



CS 7200

Intraoral Imaging Plate System

The everyday digital system that's as easy as film. With its slim, compact design, the CS 7200 is the perfect chairside system for routine intraoral exams and an easy, affordable digital solution for your practice.

Features and benefits

- True resolution up to 19 lp/ml
- Covers most intraoral indications including periapical, bitewing and pediatric exams
- Space-saving design and quick scanning
- Simple workflow – no clicks required
- Thin, flexible plates
- Better diagnostic and improved workflow with CS Adapt (for details see page 30)



Product	Cat. No.
CS 7200	1067479
CS 7200 3-year Care-Protect	5317086

Technical specifications

Imaging plate scanning resolution	Ultra high resolution	19 lp/mm
	High resolution	14 lp/mm
	High speed	8 lp/mm
Plate Sizes	Size 0 – 22 mm x 35 mm	
	Size 1 – 24 mm x 40 mm	
	Size 2 – 31 mm x 41 mm	
Power supply	100-240 V (ac), 50/60 Hz, 1.2 A	
Connectivity	USB	
System dimensions	270 (H) x 130 (W) x 300 (D) mm	
Weight	3.5 kg	

Recommended PC requirements see page 35



CS 7600

Intraoral Imaging Plate System

The first imaging plate system to feature a fully automated and secure workflow designed to improve productivity and user experience by allowing multiple operators to use the system on multiple patients at the same time, with no waiting required and no risk of errors.

Features and benefits

- High image resolution (up to 18 lp/mm) with a wide exposure range
- First image viewable in as few as 5 seconds.
Full Mouth Series from 2-6 minutes
- Can be used by multiple users at the same time
- Built-in memory eliminates the risk of lost images and allows users to scan plates during network failure
- **Scan & Go** technology
 - Fully secure and automated workflow, avoiding plate mix-up, confusion, and mistakes
 - Secured multi-patients and multi-users management at the same time
 - Bulk scanning reduces operating time
- Remote services help reduce downtime and optimize service cost
- Better diagnostic and improved workflow with CS Adapt (for details see page 30)



Product	Cat. No.
CS 7600 (incl. two Scan & Go devices)	1014307
CS 7600 2 x Scan & Go device	1014315
CS 7600 3-year Care-Protect	5317086

Technical specifications

Imaging plate scanning resolution	Super high resolution	17 lp/mm
	High resolution	14 lp/mm
	High speed	8 lp/mm
Plate Sizes	Size 0 – 22 mm x 35 mm	
	Size 1 – 24 mm x 40 mm	
	Size 2 – 31 mm x 41 mm	
	Size 3 – 27 mm x 54 mm	
	Size 4 – 57 mm x 76 mm	
Power supply	100-240 V (ac), 50/60 Hz, 1.5 A	
Display	7.5 cm (3.5") color LCD display	
Unit dimensions (without bracket)	266 (H) x 237 (W) x 259 (D) mm	
Weight	6 kg	

Recommended PC requirements see page 35



CS 8100

Extraoral Imaging System

The sleek and simple panoramic unit that's ideal for everyday use. Blending advanced technologies in an ultra-compact design, the system provides everything you need to capture high-quality, crystal-clear images in seconds.

Features and benefits

- Compact, slim unit – perfect for tight spaces
- Versatile imaging programs cover all your daily panoramic needs
- Use artifact-free image filters to adjust contrast and sharpness with one click
- Acquire images in 10 seconds; then access them instantly
- Convenient and practical face-to-face patient positioning
- Includes our user-friendly and powerful imaging software
- Exclusive 2D+ Technology: allows for buccal/lingual exploration and visualization of multiple slices for more details than ever
- Better diagnostic and improved workflow with CS Adapt (for details see page 30)



reddot design award
winner 2013

Product	Cat. No.
CS 8100	5311329
CS 8100 3-year Care-Protect	5317128

Technical specifications see page 15

Recommended PC requirements see page 35



CS 8100 3D

Extraoral Imaging System

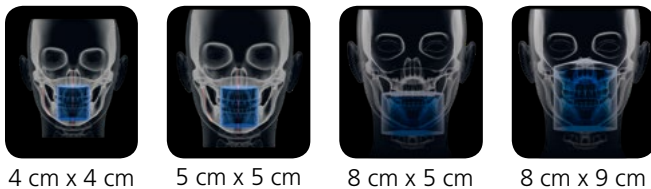
The CS 8100 3D combines 2D and 3D imaging in one unit, helping general practitioners, endodontists, periodontists and other specialists alike fulfill all of their routine imaging needs.

Features and benefits

- Provides best image quality for your investment
- Selectable 3D programs include four fields of view ranging from 4 x 4 cm to 8 x 9 cm
- Ultra-high resolution perfect for endodontic needs (75µm)
- Multifunction system covers a broad range of dental procedures
- Lightweight, ultra-compact unit fits easily in small spaces
- Delivers outstanding value; quick return on investment
- Easy to install, learn, and use
- Better diagnostic and improved workflow with CS Adapt (for details see page 30)



**CAD/CAM
COMPATIBLE**



4 cm x 4 cm 5 cm x 5 cm 8 cm x 5 cm 8 cm x 9 cm

Product	Cat. No.
CS 8100 3D	5500319
CS 8100 3D Access (4 x 4 cm, 5 x 5 cm)	5500327
CS 8100 3D 3-year Care-Protect	5317144

Technical specifications see page 15

Recommended PC requirements see page 35



CS 8100SC / CS 8100SC 3D Extraoral Imaging System

The unit features the award-winning technology and compact design concept of the CS 8100 system but with the added benefit of advanced cephalometric imaging.

Features and benefits

- Same features as CS 8100 or CS 8100 3D system, plus cephalometric imaging, offering a range of new diagnostic possibilities
- Versatile cephalometric image formats: 26 x 24 cm, 18 x 24 cm and 18 x 18 cm
- Short exposure time reduces patient dose and the risk of motion blur
- Exclusive automatic tracings for faster diagnosis
- Optimized visualization thanks to orthodontic pre-set filters
- Advanced imaging technology ensures crystal-clear image capture
- Dual sensors – one for panoramic and cephalometric imaging, no need to change the sensor between examinations
- Unrivalled combination of small size and powerful performance



Product	Cat. No.
CS 8100SC	5314349
CS 8100SC 3-year Care-Protect	5320601
CS 8100SC 3D	5500111
CS 8100SC 3D 3-year Care-Protect	5325972

Technical specifications see page 15

Recommended PC requirements see page 35

CS 8100 Family

Technical specifications

3D Modality

Sensor	CMOS
Scan mode	Continuous and pulse
Exposure time	7 to 15 seconds
Field Of View (cm)	4 x 4 / 5 x 5 / 8 x 5 / 8 x 8 / 8 x 9
Voxel size (µm)	75µm minimum
Reconstruction time	Less than 2 minutes

Cephalometric Modality

Technology	Scan
Sensor	CMOS
Gray scale	16384 – 14 bits
Image field	6.4 x 263.3 mm
Magnification	1.13 (± 10%)
Exposure time	3 to 10 seconds
Radiological exam options	Lateral, frontal AP or PA, oblique, submento-vertex, carpus (optional)
Cephalometric formats	26 x 24 cm, 18 x 24 cm and 18 x 18 cm
Minimum required space	1842 (L) x 1133 (D) x 1596 (min H) mm
Weight	107 kg

Panoramic Modality

Sensor	CMOS
Gray scale	4096 - 12 bits
Sensor matrix	64 x 1312 pixels
Magnification	1.2 (± 10%)
Exposure time	2 to 12.5 seconds
Exposure mode	4 patient sizes (child, small, medium, large)
Radiological exam options	Full panoramic, segmented panoramic, maxillary sinus, LA TMJ x 2, LA TMJ x 4, 2D+

X-Ray Generator and other specifications

Tube voltage	60 - 90 kV
Tube current	2 - 15 mA
Frequency	140 kHz
Tube focal spot	0.5 mm (IEC 60336)
Total filtration	> 2.5 mm eq. Al
Unit dimensions	330 (L) x 894 (D) x 1596 (H) mm
Weight	72 kg



CS 9300 / CS 9300C

Digital Imaging System

The CS 9300 features flexible field of view for truly adaptable 3D imaging and offers unprecedented diagnostic capabilities, covering the widest array of clinical applications in the market. The Low Dose mode reduces radiation dose and scanning times when compared to the system's standard imaging acquisition program.



Features and benefits

- Adjustable field of view size from 5x5 cm to 17x13.5 cm
- Adaptable to all examination needs
- Delivers up to an 85% lower radiation dose than 2D panoramic imaging with Low Dose mode
- Combines industry-leading panoramic imaging with powerful 3D imaging
- Full DICOM compliance; compatible with third-party software such as Nobel Guide, Simplant, and SureSmile
- Optional one-shot cephalometric imaging
- Variable focal trough 2D panoramic image
- CAD/CAM compatible: Scanning impressions to create 3D digital models
- Better diagnostic and improved workflow with CS Adapt (for details see page 30)



**CAD/CAM
COMPATIBLE**

Available in four versions: CS 9300, CS 9300C, CS 9300 Select and CS 9300C Select

Product	Cat. No.
CS 9300	5321849
CS 9300 3-year Care-Protect	5317235
CS 9300 Select*	5321823
CS 9300 Select 3-year Care-Protect	5317250
CS 9300C	5321856
CS 9300C 3-year Care-Protect	5317276
CS 9300C Select*	5321831
CS 9300C Select 3-year Care-Protect	5317292
Cephalometric upgrade	5211016

*CS 9300 Select is not upgradable to CS 9300

Digital extraoral radiography

CS 9300



- Voxel size: 90 to 500
- FOV (cm): 5 x 5, 8 x 8, 10 x 5, 10 x 10, 17 x 6, 17 x 11, 17 x 13.5

CS 9300 Select



- Voxel size: 90 to 300
- FOV (cm): 5 x 5, 8 x 8, 10 x 5, 10 x 10

CS 9300 Select is not upgradable to CS 9300

Technical specifications

3D Modality

Sensor	TFT
Scan mode	Continuous and pulse
Scanning time	12-28 seconds (+/- 10%)
Voxel size (µm)	90 to 500
Field of view (cm) CS 9300	5 x 5, 8 x 8, 10 x 5, 10 x 10, 17 x 6, 17 x 11, 17 x 13.5
Field of view (cm) CS 9300 Select	5 x 5, 8 x 8, 10 x 5, 10 x 10
Reconstruction time	Less than 2 minutes based on the recommended computer systems configuration requirements

Cephalometric Modality

Sensor	CCD
Gray scale	16384 - 14 bit
Sensor matrix	2100 x 2092 pixels
Magnification	1.15
Exposure time	0.1 to 3.2 seconds
Radiological exam options	Lateral, frontal AP or PA, oblique, submentovertex, carpus
Acquisition format size (cm)	18 x 18, 18 x 24, 24 x 24, 24 x 30, 30 x 30

Panoramic Modality

Sensor	TFT
Gray scale	16384 - 14 bit
Sensor matrix	64 x 1536 pixels
Magnification	1.22
Exposure time	4 to 16 seconds
Radiological exam options	Panoramic, segmented panoramic, maxillary sinus

X-Ray Generator and Other Specifications

Tube voltage	60-80 kV
Tube current	2-15mA
Frequency	140 kHz
Tube focal spot	0.7 mm (IEC 60336)
Input voltage	220 - 230 - 240 V - 50/60 Hz, 100 - 110 - 130 V - 50/60 Hz
Unit dimensions	1158 (L) x 1595 (D) x 2378 (max H) mm With cephalometric module: 2137 (L) x 1595 (D) x 2378 (max H) mm
Weight	160 kg, with cephalometric module 199 kg

Recommended PC requirements see page 35



CS 9600

So smart, yet so simple

CS 9600 enables new levels of image quality, usability and, ultimately, precise diagnostic capabilities. The system features intelligent innovations and automated workflow technologies to ensure reliable patient positioning and reproducible image quality. And for a future the system can grow with your practice – thanks to upgradeable fields of view, versatile imaging options and added-value software.

Features and benefits

- Available in three upgradeable versions – 12 x 10 cm, 16 x 10 cm, 16 x 17 cm – with a wide range of selectable fields of view that are ideal for examining the dental and maxillofacial region, as well as TMJ, sinus, ears, cervical spine joints and wrist joints
- Patients are positioned using cameras, while live patient views are displayed on the touch-screen for easy and exact positioning
- SmartAuto Pan and SmartAuto 3D analyze the patient morphology and density to automatically calculate the right exposure settings and trajectory, or to precisely define the field-of-view position
- A sleek, modern touch screen and clear user interface guide you through the entire exam protocol and offer a new level of intuitive operation
- CS MAR drastically reduces metal artifacts and even lets you explore images dynamically – with and without a filter – for more confident diagnosis
- The 120-kV high-power imaging chain helps reduce artifacts and improve contrasts while reducing effective dose for CBCT exams
- Capture realistic 3D facial photos with the optional CS Face Scan, and automatically superimpose the surface scan with CBCT images and 3D models

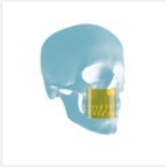


**CAD/CAM
COMPATIBLE**

Product	Cat. No.
CS 9600 12 x 10 unit	5501192
CS 9600 16 x 10 FOV activation	5330568
CS 9600 16 x 17 FOV activation	5330584
CS MAR	5330626
CS SmartAuto Package (Pan & 3D)	5330667
CS Face Scan	5940069
120kV License	5330642
Patient Seat	5501200
CS 9600 CS Advantage 5-year Plan	5330725

Digital extraoral radiography

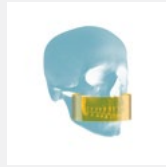
CS 9600



4 cm x 4 cm,
5 cm x 5 cm,
6 cm x 6 cm



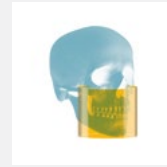
5 cm x 8 cm



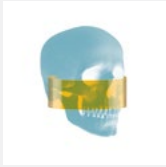
8 cm x 5 cm,
10 cm x 5 cm,
12 cm x 5 cm



8 cm x 8 cm
10 cm x 10 cm



12 cm x 10 cm



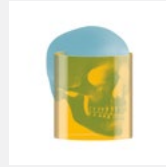
16 cm x 6 cm



16 cm x 10 cm



16 cm x 12 cm



16 cm x 17 cm

Technical specifications

3D Modality

Sensor	CMOS
Scan mode	Continuous
Exposure time	5.5 to 40 seconds (20 x 20 seconds)
Field of View	4 x 4 / 5 x 5 / 5 x 8 / 6 x 6 / 8 x 5 / 8 x 8 / 10 x 5 / 10 x 10* / 12 x 5 / 12 x 10* / 16 x 6 / 16 x 10* / 16 x 12 / 16 x 17* *with tip of the volume
Voxel size	75 µm
Radiological exam options	Tooth / teeth, full, upper or lower jaw, TMJ, Face, ENT, upper cervical spine, wrist

Panoramic Modality

Sensor	CMOS
Gray scale	16384 – 14 bits
Magnification	1.2
Exposure time	0.5 to 13 s
Exposure mode	4 patient sizes: child, small adult, medium adult, large adult 3 dental arch morphologies: normal, square, sharp
Radiological exam options	Full panoramic, segmented panoramic, bitewing, maxillary sinus, lateral TMJ x 2, lateral TMJ x 4, Sinus AP/PA/Lateral, orthogonal panoramic

X-Ray Generator and Other Specifications

Tube voltage	60 – 90 kV / 60 – 120 kV (optional)
Tube current	2 – 15 mA
Frequency	140 kHz
Tube focal spot	0.3 or 0.7 mm
Total filtration	>2.5 mm et. Al
Unit dimensions	1284 (L) x 1669 (D) x 2526 mm (H) 1500 (L) x 2000 (D) x 2200 (H) mm (without optional seat or when seat installed on the left)
Required space	1900 (L) x 2000 (D) x 2200 (H) mm (with optional seat installed on the right)
Weight	210 kg

Recommended PC requirements see page 35

Comparative Matrix for Extraoral Range

Modalities and Features	 CS 8100 CS 8100SC	 CS 8100 3D CS 8100SC 3D	 CS 9300 Select CS 9300C Select	 CS 9300 CS 9300C	 CS 9600 12x10 Edition	 CS 9600 16x10 Edition	 CS 9600 16x17 Edition
2D panoramic, TMJ, sinus	✓	✓	✓	✓	✓	✓	✓
2D cephalometric	Optional	Optional	Optional	Optional	Ceph Ready	Ceph Ready	Ceph Ready
3D imaging	Upgradeable to 3D	✓	✓	✓	✓	✓	✓
3D fields of view size (cm)	N/A	Selectable: 4x4, 5x5, 8x5, 8x9	Selectable: 5x5, 8x8, 10x5, 10x10	Selectable: 5x5, 8x8, 10x5, 10x10, 17x6, 17x11, 17x13.5	Selectable: 4x4, 5x5, 6x6, 5x8, 8x5, 8x8, 10x5, 10x10, 12x5, 12x10	Selectable: 4x4, 5x5, 6x6, 5x8, 8x5, 8x8, 10x5, 10x10, 12x5, 12x10, 16x6, 16x10	Selectable: 4x4, 5x5, 6x6, 5x8, 8x5, 8x8, 10x5, 10x10, 12x5, 12x10, 16x6, 16x10, 16x12, 16x17
Applications	CS 8100 CS 8100SC	CS 8100 3D CS 8100SC 3D	CS 9300 Select CS 9300C Select	CS 9300 CS 9300C	CS 9600 12x10 Edition	CS 9600 16x10 Edition	CS 9600 16x17 Edition
General practice	•••	•••	••	•	••	•	•
Endodontics		•••	••	•	••	•	•
Implantology	•	••	••	•••	•••	•••	•
Periodontics	•	•••	••	•••	•••	•••	•
Oral and maxillofacial surgery	•	•	••	•••	•••	•••	•••
Orthodontics	•••	••	•••	•••	•	•	••
Radiology center			•	••	•	•	•••
ENT practice				••			•••

• Good •• Better ••• Best **Please note:** The bullet ratings listed above are simply recommendations based on feedback from our thought leaders and users. One bullet indicates the unit meets basic requirements for the application; three bullets indicate it is the best choice.

Extraoral imaging programs

CS 8100

Panoramic imaging



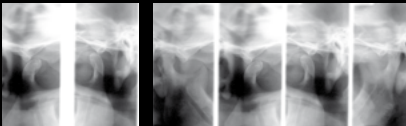
Standard panoramic



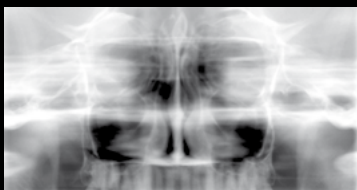
Pediatric panoramic



Segmented panoramic

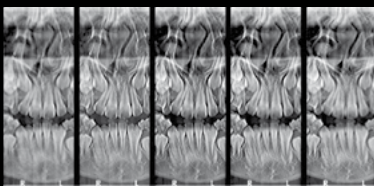


Lateral TMJ x2 Lateral TMJ x4



Maxillary sinus

2D+



Cephalometric imaging



Cranial format 26 cm x 24 cm



Standard format 18 cm x 24 cm



Reduces format 18 cm x 18 cm



Lateral view



Frontal views (AP/PA)



Carpus

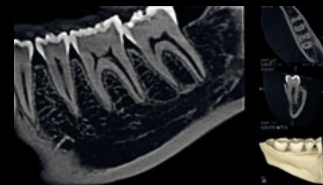
3D imaging



Universal field of view
5 cm x 5 cm



Pediatric mode 4 cm x 4 cm



Endo HD mode 5 cm x 5 cm



Single jaw mode 8 cm x 5 cm



Dual jaw mode 8 cm x 9 cm

Extraoral imaging programs

CS 9300

FOV	REGION OF INTEREST	SAMPLE IMAGES		RECOMMENDED APPLICATIONS
17 x 13.5				<ul style="list-style-type: none"> • Orthodontics • Complex treatment planning • Orthognathic surgery • Facial reconstruction • Traumas • Sinus and airway analyses
17 x 11				<ul style="list-style-type: none"> • Orthodontics • Complex treatment planning • Orthognathic surgery • Facial reconstruction • Traumas • Sinus and airway analyses
10 x 10				<ul style="list-style-type: none"> • Implantology • Complex impactions • Other cases involving both dental arches • Single TMJ assessments
17 x 6 - TMJx2				<ul style="list-style-type: none"> • Double TMJ assessments
10 x 5				<ul style="list-style-type: none"> • Implantology, • Impactions • Other cases involving one dental arch
8 x 8 - TMJx1				<ul style="list-style-type: none"> • Single TMJ assessments
8 x 8				<ul style="list-style-type: none"> • Implantology • Complex impactions • Other cases involving both dental arches
5 x 5				<ul style="list-style-type: none"> • Endodontics • Single implants • Impactions • TAD planning • Any applications requiring a high level of detail (90µm)

Panoramic



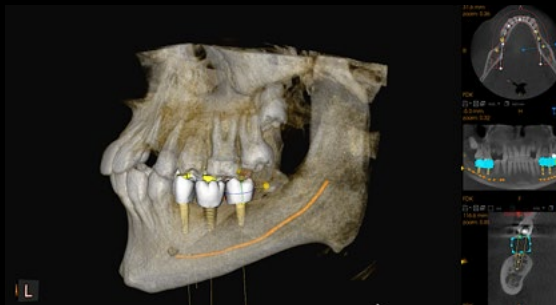
A complete range of panoramic programs cover all of your routine needs, including, but not limited to extraoral bitewing, extraoral FMS and low dose options

Endodontics



High resolution images (up to 75 μ m) are perfectly suited for endodontic indications and can now be captured on focused FOV, single and dual jaw modes.

Implants



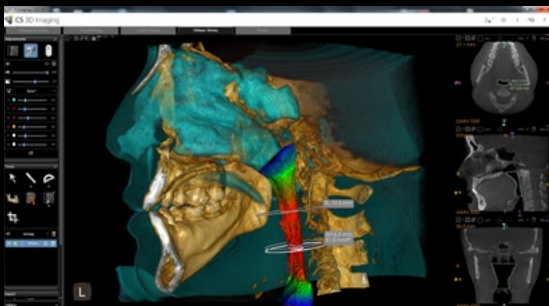
Plan implants with confidence using our advanced implant planning software with customisable virtual crowns and comprehensive implant library.

Oral and Maxillofacial Surgery



With up to 14 fields of view, including full skull and TMJ imaging, the CS 9600 is ideal for maxillofacial surgery—including orthognathics.

Airway Analysis



Analyse the upper airway with automatic measurements and color-coded 3D views to easily visualise constrictions and changes in airway.

3D Facial Scanning



Capture the realistic 3D image of the patient's face and combine it with the CBCT image.

CS 3600 / CS 3600 Access

Intraoral Scanner

Scan smarter. Easier. Faster. Open.

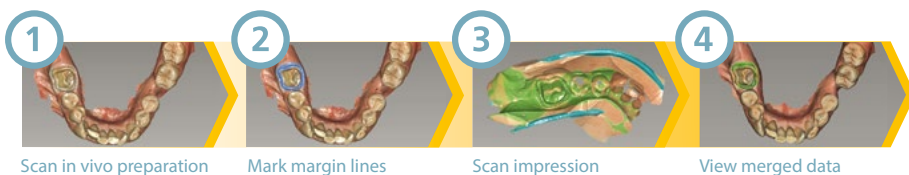
CS 3600 offers you precise, accurate full 3D HD colour scanning.

CS 3600 Access provides you with the same quality, accuracy and efficiency in monochromatic mode.

Features and benefits

- High-speed continuous scanning
- Intelligent Matching System allows you to freely complete any missing data in any area
- Scan data history allows you to remove any excess scanned tissue for a more refined final digital impression
- Facilitates a wide range of applications, with dedicated workflows for restorations, orthodontics and implantborne restorations
- An intuitive, guided step-by-step user interface
- Autoclavable, reusable tips in two interchangeable styles
- Open system scanning provides optimal flexibility due to open STL and PLY file outputs
- New multi-bite mode - up to three different bite positions for the same patient
- Direct link to exocad chairside

Hybrid scan workflow



Technical specifications

Sensor technology	1/2 inch CMOS
Illumination	LED, Amber, Blue, Green
Field of view	13 x 13 mm
Depth of field	-2 to +12 mm
Anti-fogging technology	Actively heated tip, guaranteed non-fogging operation when used intraorally
Cable length	2.7 m (1.8 m + 0.9 m)
Digital connection	USB 2.0 High Speed
Dimensions without cable	220 x 38 x 58 mm for normal and side tips
Weight	245 x 37 x 62 mm
Handpiece	295 g
Power box (Input / Output)	75 x 21 x 21 mm (12V 2A / 12V 2A)
Adapter Input / Output	100-240V ~ 50/60Hz, 600mA / 12.0V 2.0A

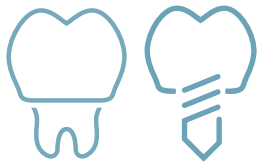
Recommended PC requirements see page 37



Product	Cat. No.
CS 3600 Intraoral Scanner	6568745
CS 3600 Access Intraoral Scanner	6577159
CS 3600 5-year CS Advantage Plan	5329889

Validated Partners

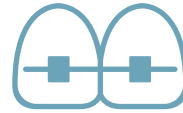
Carestream Dental has been actively engaging with leading companies in the dental industry to provide the best digital solutions for restorative, implant, guided surgery, orthodontic and sleep device workflows. The following companies have validated workflows with the CS 3600 intraoral scanner. Due to its open system architecture, the CS 3600 works with any CAD software that accepts STL files, even if they are not included below. Additionally, labs and referrals can view the full color HD images and marked margin lines using the CS MeshViewer.



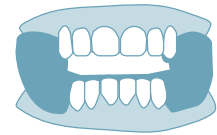
RESTORATIVE AND IMPLANT WORKFLOWS



GUIDED SURGERY WORKFLOWS



ORTHODONTIC APPLIANCES AND TREATMENT



SLEEP DENTISTRY AND APPLIANCES

- 3Shape*
- Ceramill Mind
- Anthrogyr
- DWOS
- DWOS Chairside
- Dentsply Atlantis
- Exocad
- Exocad chairside CAD
- Glidewell
- Global D
- Jensen Preciso CAD
- MIS
- Modjaw
- NobelProcera
- Sweden & Martina
- Ziacom Zinic 3D
- ZirkonZahn Modellier*

- 360 Imaging
- 3DDX
- 3Shape Implant Studio*
- Blue Skyplan*
- MIS – MGUIDE
- NobelClinician
- Simplant
- Straumann Co
- DiagnostiX*
- Swissmeda SMOP
- Ziacom Zinic 3D

- ArcadLab
- CA Digital
- Cfast
- Clear Correct
- e-Aligner
- EON Aligners
- Exceed
- Harmony
- Ideal Smile Aligner
- Incognito
- Insignia
- Motion View
- Onyx Ceph
- Orchestrate 3D
- Orthocaps
- Modjaw
- Nutislab
- Rx Aligners
- S4S
- Suresmile
- ZeroBase
- 6 Month Smiles

- Panthera
- ProSomnus Sleep Technologies
- SomnoMed



All trademarks and registered trademarks are the property of their respective owners.

*Datasets are compatible but are pending formal validation.

CS 3100*

Milling Machine



Make one-appointment restorations a reality in your practice.

CS 3100 delivers the optimal HD chairside user experience for aesthetic restorations combining the top-of-the-line CS 3600 with exocad Chairside CAD software.

Features and benefits

- The CS 3100 features a 4-axis brushless motor and an exceptionally precise spindle capable of grinding at speeds up to 100,000 rpm
- Simply transfer the crown design to the mill, insert the block (and, if needed, a new bur), close the door and push start
- Smart Milling Queue Management in exocad Chairside CAD software enables you to prepare multiple restorations, one after another, while the automated block selection reduces user error
- Quiet, vibration-free milling, no compressed air, water supply or drain needed
- Compatible with all blocks available at the market
- Fully integrated with Carestream Dental products

*Not available in all countries



exocad

Product	Cat. No.
CS 3100	5500889

Technical specifications

Milling unit	4 axis
Spindle speed	100,000 rpm
Motor technology	Brushless
Spindle torque	9.2 ncm
Positioning precision	<10 µm
Power	750 W
Electrical connection	100 – 230 V 50/60 Hz
Tank	2,7 liter
Noise level	60 dB (A)
Interfaces	USB, Ethernet, Slot for SD card, WLAN
Unit dimensions	480 x 640 x 540 mm
Weight	66 kg

Recommended PC requirements see page 35

CBCT

Impression Scanning

Accurate 3D models plus broad diagnostic capabilities

Using the CS 8100 3D, CS 9300 and CS 9600, you can scan traditional impressions to create high precision 3D models quickly and easily.

Features and benefits

- Precise scanning, even in hard-to-reach areas, for superior clinical results
- Digital impressions with an average resolution of 30 µm
- Works with any A-silicon impression material
- Covers single tooth indications (full crown, inlay, onlay)
- Intuitive interface and dedicated platform for fast and precise scanning
- Open STL format fits any workflow

An upgrade kit is required for 3D units produced prior to 2011.



Product	Cat. No.
CBCT STL Converter (1 activation)	5310784

Three simple steps to a 3D model



1 Take impression and bite using silicon material

2 Scan the impression using your CBCT system from Carestream Dental's CS 9300 or CS 8100 families

3 Design restorations in CS Restore software, or review digital orthodontic models via CS Model

Product	Description	Specialty	Features	Benefits
CS Imaging Software Version 7	Standard imaging software. Available until end of 2018.	All	<ul style="list-style-type: none"> Integration of 3rd party software One software for all imaging equipment Patient browser 2D imaging processing incl. cephalometric tracing Export/import of images 2D printing 	<ul style="list-style-type: none"> Best return on investment with a single platform Minimal learning curve Fast diagnosis No double entries
CS Imaging Software Version 8	The new hub of your practice. Replaces CS Imaging 7 from January 2019.	All	<ul style="list-style-type: none"> All features and benefits of CS Imaging 7 and much more All images in one platform, without switching between programs New intuitive interface 	
CS Adapt (included in CS Imaging Software)	Customisable enhancement imaging filters for RVG, CR, panoramic and cephalometric images.	All	<ul style="list-style-type: none"> Define your own image look and feel State-of-the-art image processing Intuitive filter library for easy selection 	<ul style="list-style-type: none"> Faster and more accurate diagnosis Reduced risk of misdiagnosis No more processing artefacts/dark halos
Auto Tracing (included in CS Imaging Software)	Customisable cephalometric tracing software.	Ortho, Maxillofacial surgery, ENT	<ul style="list-style-type: none"> Automatic tracings Several methods of analysis available Adaptable to your needs 	<ul style="list-style-type: none"> Immense time saving Choose the analysis you're familiar with
CS 3D Software (included in CS Imaging Software)	State of the art 3D software with viewing, measurements, nerve tracing, implant simulation and printing capabilities.	All, ENT	<ul style="list-style-type: none"> Four working tabs from easy to specific diagnostics needs MPPR/3D rendering Implant simulation Export, print and CD creation 	<ul style="list-style-type: none"> Intuitive and easy to use Low learning curve 3rd party interface Stand-alone viewer makes image sharing easy
Film Composer (included in CS Imaging Software)	Export images into PDF format and print.	All, ENT	<ul style="list-style-type: none"> Export to PDF Print 1:1 Customisable templates 	<ul style="list-style-type: none"> Improved communication and ease acceptance Better diagnostics
CS Airways (optional module of CS Imaging Software)	Optional CS 3D module for quick and simple airway analysis.	ENT, Maxillofacial surgery, Ortho, Sleep Apnea	<ul style="list-style-type: none"> Always segmentation Automatic calculation of total volume, minimal cross-sectional area, anterior/posterior and left/right measurements Customised colour scale 	<ul style="list-style-type: none"> Clear constrictions visualisation Simplified clinicians experience Easy adjustment of parameters Safer examinations
CS Model (optional module of CS Imaging Software)	Create, review, store and share 3D models quickly and cost effectively.	Ortho	<ul style="list-style-type: none"> Automatic base creation Coloured occlusion map Multi-view printing 	<ul style="list-style-type: none"> Time and space savings Simulation of movements Increased case acceptance
CS Model +	Automatic segmentation and digital set-up for creation of an appropriate treatment plan with simulation capabilities.	Ortho	<ul style="list-style-type: none"> Automatic segmentation and digital set-up Easy-to-use tools for modification of treatment proposals 	<ul style="list-style-type: none"> Time and space savings Simulation of movements Increased case acceptance
CS Mesh Viewer	Free STL viewer/export software	All, ENT	<ul style="list-style-type: none"> Supports DICOM, PLY and STL filters Allows orientation changes 	<ul style="list-style-type: none"> Maximise return on investment for CBCT equipment Easy sharing with 3rd party software
Prosthetic Driven Implant Planning – PDIP (optional module of CS Imaging Software)	Optional CS 3D module as an integrated digital implant solution for more predictable diagnoses and higher confidence when placing implants.	Implantology	<ul style="list-style-type: none"> Automatic merge of digital impression and CBCT data Implant positioning based on ideal future restoration 	<ul style="list-style-type: none"> Predictable outcome Faster treatment Increased case acceptance
CS Connect (included in CS Advantage Plan for CS 3600)	A secure on-line portal to send digital impressions data to any laboratory.	All	<ul style="list-style-type: none"> Secure data transfer Online forms Easy communication with labs 	<ul style="list-style-type: none"> Integrated workflow Cost savings Customisable forms
CBCT STL Converter	Allows high quality STL export of silicon impressions or stone models acquired with CBCT scan.	All, ENT	<ul style="list-style-type: none"> High quality STL export Free Mesh Viewer software 	<ul style="list-style-type: none"> Maximise return on investment for CBCT equipment Easy sharing capabilities
CBCT STL Converter Suite	Allows high quality STL export of silicon impressions or stone models acquired with CBCT scan for CS Model with automatic creation of the base: ABO/Simple	Ortho	<ul style="list-style-type: none"> High quality STL export Free Mesh Viewer software 	<ul style="list-style-type: none"> Maximise return on investment for CBCT equipment Easy sharing capabilities
Trophy DICOM	Patient database with DICOM functionalities, which allows the connection of Carestream dental digital imaging system to a DICOM network.	Radiology, clinics, hospitals	<ul style="list-style-type: none"> DICOM 3.0 compliant Common image database 	<ul style="list-style-type: none"> Full integration within DICOM 3.0 workflow Integration of several CS Imaging workstations
CS Acquisition	Easy DICOM workflow for extraoral and 3D modalities like: DICOM worklist, DICOM storage SCU/SCP, DICOM print SCU	Radiology, clinics, hospitals	<ul style="list-style-type: none"> Independent application Embedded visualisation tools for quality control Works with extraoral imaging systems 	<ul style="list-style-type: none"> Easy integrations of dental modalities in DICOM 3.0 systems True radiology-like workflow Time saving (query, acquire, control, print)

CS Imaging Software Version 7

CS Imaging version 7 is the control platform for Carestream Dental's digital imaging equipment and CAD/CAM systems. Designed to support everyday diagnostic needs, the user-friendly software provides the tools you need to work efficiently.



Features and benefits

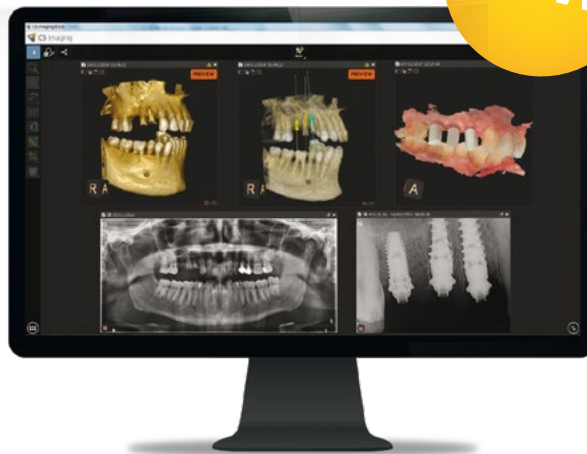
- Patient Browser makes searching quick and easy
- CS Adapt Module – customised look and feel of your images and automatic access to your favorite filters
- Exclusive automatic tracing software – full tracing within 90 seconds
- Full range of image analysis tools: sharpness filters, zoom, brightness/contrast, etc.
- Multiple display modes, including X-ray comparison
- Customisable FMS mounts automatically arrange image series in the correct order
- Images can be shared in all common image file formats
- Can be used as standalone program or integrated within practice management software

Product	Cat. No.
CS Imaging Version 7	5314307

CS Imaging Software Version 8

The new hub of your practice.

CS Imaging version 8 - the platform that provides one-stop access to all your 2D images, 3D images and CAD/CAM data. It offers a faster, more efficient way to access, review and share images so you can present treatment proposals more clearly to patients and increase case acceptance.



Features and benefits

- Manage all images in one platform, without switching between programs
- New, intuitive interface is designed to reduce clicks
- Quickly access patient images while chair side or at the front desk
- Combine 2D, 3D and CAD/CAM images on one screen for better treatment planning and case presentations
- Use powerful analysis tools and cross-image comparisons
- Easily share data with your treatment team
- Obtain automatic tracings in just 10 seconds
- Apply filters to several images at the same time
- Display and save as many measures as needed
- Display pre and post 3D images side by side without opening CS 3D Imaging Software

Product	Cat. No.
CS Imaging 8 Suite - DVD and documentation	5314307
CS Imaging 8 – 1 activation	5500699
CS Imaging 8 – 5 activations	5500707
CS Imaging 8 – 20 activations	5500715
CS Imaging 8 5-year CS Advantage – 1 activation	5330683

CS Adapt

Upgrade to more individualised diagnostics. Imaging that works the way you do.

The state-of-the-art rendering algorithms of CS Adapt let you decide how you want your images to appear.

Features and benefits

- Six panoramic look & feel filter presets
- Four cephalometric look and feel filter presets
- Ability to define your own look & feel
- Intuitive library-style browsing and selection
- State-of-the-art image quality
- No more processing artifacts or “dark halos”
- Same flexibility and quality across devices



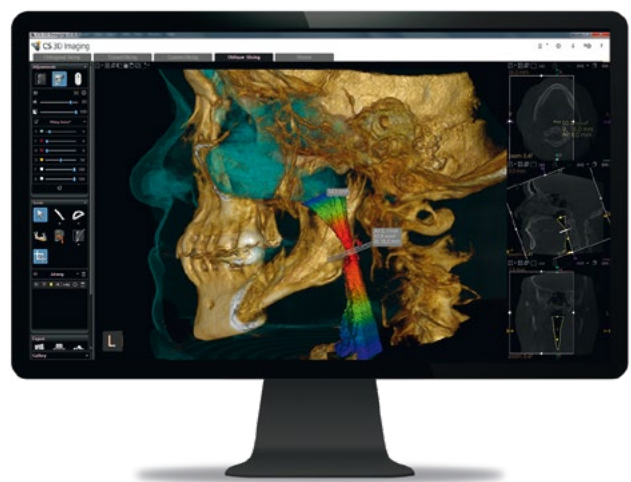
CS Airway

Clear Visualisation. Fast Analysis. Enhanced communication.

Use 3D imaging for quick and simple airway analysis.

Features and benefits

- Simplifies airway analysis by providing segmentation in as little as two clicks
- Automatically calculates total volume, minimal cross-sectional area, anterior/posterior and left/right measurements
- Displays and updates measurement values in real time



Product	Cat. No.
CS Airway - 5 activations	5500582
CS Airway - 2 activations	5500590

Prosthetic-Driven Implant Planning

Prosthetic-Driven Implant Planning with CS 3D Imaging is designed to make implant placement simple – delivering optimal results to ensure confidence and improve predictability of treatment outcomes.



Features and benefits

- Ability to visualize placement of implant in relation to bone and restoration
- Digital workflow improves efficiency, safety and communication
- Implant positioning based on ideal future restoration, not the other way around
- Ensures patient’s prosthetic needs, functional requirements and anatomical constraints are considered during implant planning
- Direct export to SMOP and BlueSkyPlan
 - Data export
 - Matching export
 - Implant position export



Discover a simpler workflow:

Scan Patient



Take 3D x-ray and digital impression to capture both bone structures and soft tissue situations

Merge Data



Automatically combine digital impression and CBCT scan in CS 3D Imaging

Plan Implant



Add crown and plan implant position, taking into account final restoration and anatomy

Export Data



Export 3D data into third-party software

Create Guide



Use your preferred third-party software to produce surgical guide

Product	Cat. No.
PDIP-5 activations	5321930
PDIP-2 activations	5321948

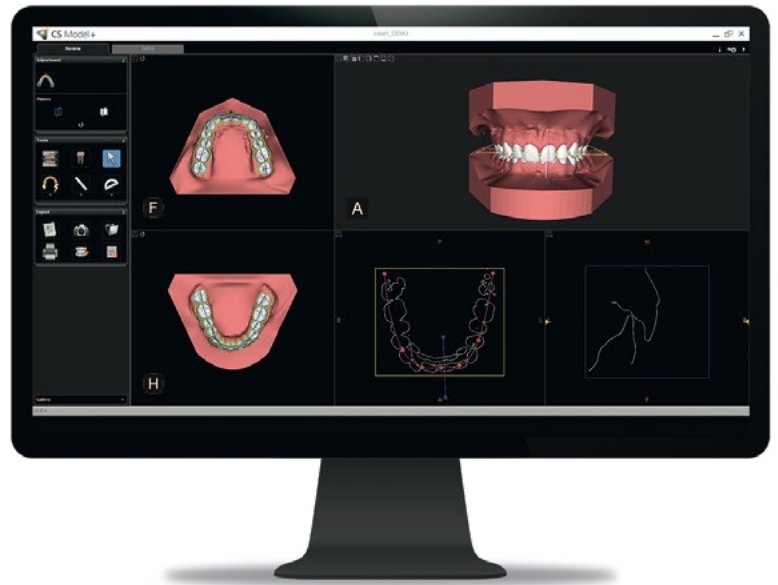
CS Model+

Automatically segment, setup and present

With CS Model+, you have a faster, more intuitive solution that enables you to evaluate your digital models and create virtual orthodontic setups in minutes.

Features and benefits

- Save time with automatic detection and labeling of the teeth
- Select teeth to be extracted, and indicate whether treatment goal is to close space, replace the tooth or to simulate IPR
- Examine inter-incisor relationship inter-canine expansion and Curve of Spee leveling
- Assess the case's level of difficulty from a wide range of common industry standards, including the Bolton discrepancy analysis, PAR index, ABO discrepancy index and more
- Simulate various virtual setups by using different therapeutic treatment options
- Obtain automatically generated, customized patient reports
- Use with digital models acquired from Carestream Dental's CBCT and intraoral scanning systems



Product	Cat. No.
CS Model+ – 5 activations	5500509
CS Model+ – 2 activations	5500491
CS Model+ 2-year CS Advantage Plan	5329917

Recommended PC requirements see page 35

CS Model

The model of perfection for orthodontic applications

Create digital models in minutes with flexible 3D scanning options.

When used with the CS 3600 intraoral scanner or our CBCT scanning systems, CS Model makes it easy to create accurate digital models for orthodontic applications. And whether you use traditional or digital impression methods, CS Model is designed to fit easily into your current workflow so the perfect digital model is just minutes away.

Features and benefits

- Obtain new models in a fraction of the time
- Create digital copies and then discard existing physical models to save space
- Store models digitally to eliminate plaster
- Avoid time-consuming model inventory procedures
- Send digital files directly to lab for appliance fabrication
- Choose from multiple scanning options to fit your workflow



Product	Cat. No.
CS Model – 10 activations	5313663
CS Model upgrade to CS Model+ – 5 activations	5500509
CS Model upgrade to CS Model+ – 2 activations	5500517

Recommended PC requirements see page 35

CS Acquisition

Streamlined workflow for oral, maxillofacial and ENT imaging.

The first software for dental and ENT applications that addresses the unique imaging needs of radiologists. Designed to acquire images quickly and easily, CS Acquisition transforms Carestream Dental oral, maxillofacial and ENT imaging systems into radiological modalities.

Features and benefits

- Familiar, time-saving radiology workflow
- Acquire dental/ENT images the same way as any other radiology modality
- Integrates seamlessly with DICOM systems
- Allows users to review, print and store images directly on radiology IT systems (PACS or DICOM printer)



Product	Cat. No.
CS Acquisition	5310438

Trophy DICOM

Trophy DICOM software is a patient database with DICOM functionalities, which allows the connection of Carestream dental digital imaging system to a DICOM network.

Trophy DICOM software integrates and interacts with any compliant DICOM 3.0 system (PACS, RIS, printers, workstations, etc.).

Main functionalities

- DICOM Modality Worklist Query to retrieve a set of orders from a RIS
- DICOM Store to multiple DICOM servers
- DICOM Query/Retrieve from multiple DICOM servers
- DICOM printing functionality
- DICOMDIR (Directory for DICOM files) functionality to perform the import and export of images in the DICOMDIR Removable Media format
- Ergonomic and user-friendly graphical interface
- Local archive and SQL patient database
- Single or multi-user network capabilities
- Easy integration with Dental Imaging Software (DIS) or CS 3D Imaging software



Product	Cat. No.
Trophy DICOM software Windows	5185814

Trophy DICOM can print both grayscale and color images on a DICOM printer connected to the network. Once the connection between Trophy DICOM software and the printer is set up, user-defined templates may be used.

Recommended PC requirements

For intraoral units: Intraoral cameras, RVG sensors, CS 7200, CS 7600

Viewing and acquisition	
CPU	Intel Core i5 or higher
RAM	4 GB
Hard disc drive	1.2 GB for software installation, 80 GB free space to use the software
Graphic board	Separate video card with min 256 MB of video RAM
Monitor	17" or larger, Minimum screen resolution of 1024 x 768, 32-bit color mode
Operating system	Windows 7 / 8 / 10 64 Bit Professional
Ethernet interface	1 Gbit for LAN
USB ports	USB 2.0 high speed or USB 3.0
CD/DVD drive	DVD-ROM drive

For extraoral units: CS 8100 Family, CS 9300 Family, CS 9600

	Viewing	Acquisition
CPU	Intel Core i5-7600K 3.80 GHz or higher	2 GHz Intel Duo Core
RAM	4 GB	8 GB, 32 GB for CS MAR option
Hard disk drive	1.2 GB for software installation 250 GB free space to use the software	4 GB for software installation 250 GB free space to use the software
Graphic board	2D – NVIDIA based card with min 512 MB	2D – NVIDIA based card with min 512 MB 3D – GeForce GTX 1060 (or equivalent NVIDIA GPU) with min 2 GB
Monitor	19" or larger Minimum screen resolution of 1024 x 768, 32-bit color mode	19" or larger Minimum screen resolution of 1280 x 1024, 32-bit color mode
Operating system	Windows 7 / 8 / 10 64 Bit Professional	Windows 7 or 8 / 64 Bit
Ethernet interface	1 Gbit for LAN	1 Gbit for system link connection 1 Gbit for LAN CS 9300 – one free PCIe slot required for Intel Pro 1000 CT (delivered with the unit)
CD/DVD drive	A DVD Burner drive is required	
Backup Media	Removable/portable external hard disk drive	
Mouse	A mouse with 2 buttons and a scroll wheel is required	

For CS Solutions: CS 3100, CS 3600 / CS 3600 Access, CS Model, CS Model+

Viewing and acquisition	
CPU	Laptop: Intel Core i7-4700QM, Quad CPU, 2.4 GHz Desktop: Intel Core i7-3770, Quad CPU, 3.4 GHz For CS 3600 Laptop: Intel Core i7-7700HQ, Quad CPU, 2.8 GHz Desktop: Intel Core i7-7700K, Quad CPU, 4.2 GHz
RAM	8 GB, 16 GB for CS 3600
Hard disc drive	1.2 GB for software installation, 120 GB free space to use the software
Graphic board	Laptop: NVIDIA GeForce GTX 660M/Quadro K2100M or similar Desktop: NVIDIA GeForce GT 560Ti For CS 3600 Laptop: NVIDIA GTX 1050 Ti or Quadro P3000 or similar Desktop: NVIDIA GeForce GTX 1050Ti or similar Supports OpenGL version 4.3 and OpenCL version 1.1, GPU with min 3 GB
Monitor	17" or larger CRT/LCD monitor with screen resolution of 1440 x 900
Operating system	Windows 7, 8, 8.1, or 10 Professional (64 bit)
Ethernet interface	1 Gbit for LAN
USB 2.0	3 ports
CD/DVD drive	DVD-ROM drive

* IMPORTANT NOTE: It is mandatory to check that the PC system configuration is compatible with the PC system requirements. If necessary, please contact our customer service to get the latest PC system requirements. The computer and the peripheral equipment must conform to the IEC 60950 standard.

Looking for an imaging solution?

We're confident we have the ideal solution for every practice!

- A full range of dental radiography and imaging systems
- 100 years' experience in dental imaging
- In-house product development and manufacturing
- Worldwide dealer and service network
- The inventor of intraoral sensor technology
- High quality standards



Would you like to know more?

carestreamdental.com

Alternatively, contact your local authorised dealer.